



# TODAY @ DEN MOVE COLORADO

June 13, 2024

JIM STARLING, CHIEF CONSTRUCTION AND INFRASTRUCTURE OFFICER  
DENVER INTERNATIONAL AIRPORT



- DEN is a City-owned enterprise, self-sustained, government-owned enterprise authorized to issue its own revenue bonds; we do not have taxpayer support or utilize money from the general fund
- Second-largest airport in the world – 53 square miles
- Six runways with room to expand to 12 runways



# DEN BY THE NUMBERS



**25**

Airlines

**200+**

Nonstop destinations

**25+**

International destinations serving

**16**

Countries



Roughly  
**1,200 companies**  
working at DEN

Approximately  
**40,000+ employees**



Colorado's largest economic engine  
**\$36.4 billion annually**

2/12/24

**3RD-BUSIEST** AIRPORT IN NORTH AMERICA | **5TH-BUSIEST** AIRPORT IN THE WORLD (ACI YTD OCT. 2023)

## PASSENGERS

**69 million**

2019

**33.7 million**

2020

**58.8 million**

2021

**69.3 million**

2022

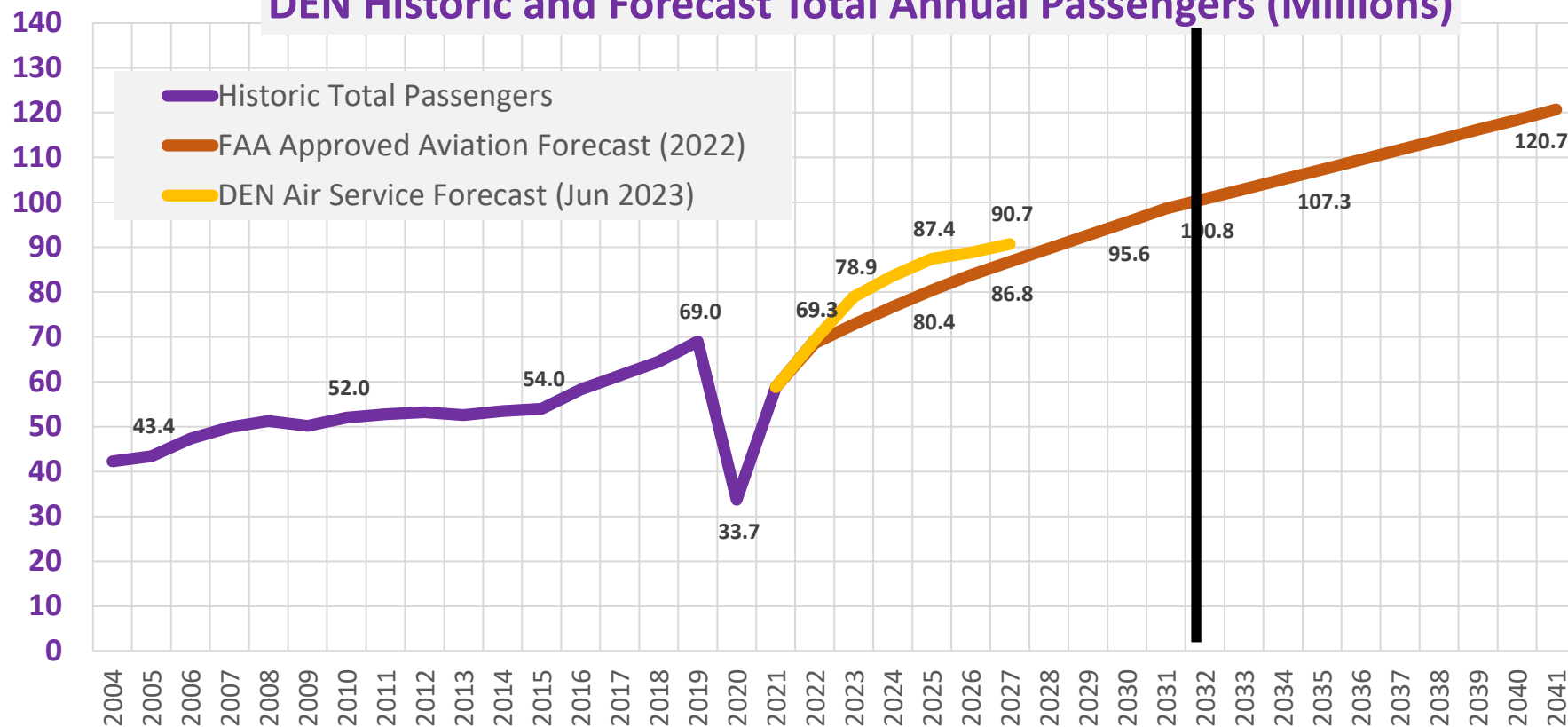
**77.8 million**

2023

# PROJECTED PASSENGER TRAFFIC



## DEN Historic and Forecast Total Annual Passengers (Millions)







# 100 MILLION ANNUAL PASSENGERS

- SUSTAINABILITY & RESILIENCY • EQUITY, DIVERSITY, INCLUSION & ACCESSIBILITY
- OPERATIONAL EXCELLENCE • ENHANCING THE CUSTOMER EXPERIENCE

## PILLAR 1



### EMPOWERING OUR PEOPLE

- Develop Workforce Leadership Strategy
- Establish Center of Equity and Excellence in Aviation
- Enable Employee Innovation

## PILLAR 2



### GROWING OUR INFRASTRUCTURE

- Complete Major Infrastructure Projects
- Update Master Plan
- Develop Infrastructure Plan for DEN Real Estate

## PILLAR 3



### MAINTAINING WHAT WE HAVE

- Upgrade and Improve the Existing Facility
- Update Strategic Asset Management Plan
- Implement Customer-Focused Initiatives
- Develop Greenhouse Gas Emissions Reduction Plan

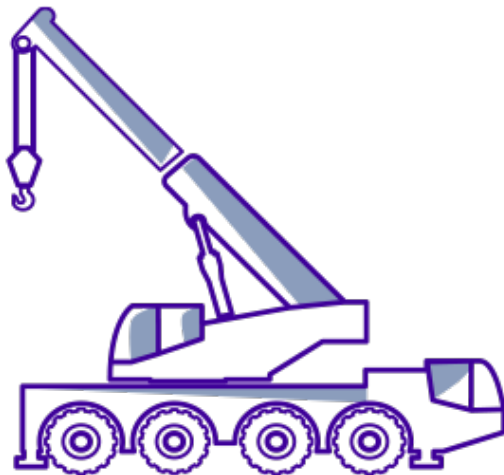
## PILLAR 4



### EXPANDING OUR GLOBAL CONNECTIONS

- Identify Air Cargo Opportunities
- Expand to Disconnected Destinations (e.g. Africa)
- Grow our Domestic Network

## PILLAR 2



# GROWING OUR INFRASTRUCTURE

- Completion of two phases of the Great Hall program
  - New ticketing areas and self bag drops for our largest airline partners
  - New security checkpoint with improved technologies
    - Three-story triple escalator taking passengers to our train to the gates
- Added 39 new gates in our Gate Expansion program
- Broke ground on the Center of Equity and Excellence in Aviation
  - Helping historically underserved individuals and businesses
- Improving the passenger experience with new restrooms, new concessions

# OPERATION 2045 AND VISION 100



DEN's strategic plan to accomplish what's necessary to serve 100 million passengers is only the first phase of a larger need



DEN will turn 50 years old in 2045 and with that comes an even greater need to maintain our existing assets while being able to further grow to accommodate **120+ million passengers.**

We WILL lay the foundation for the needed infrastructure expansion work to prepare DEN to successfully reach its half-century mark.



# VISION 100 AND OPERATION 2045



## Phase I



DEN's strategic plan to effectively serve 100 million passengers

1995  
50 MAP

2023  
77.8 MAP

2027  
100 MAP

2022  
69.3M

2032  
100M\*

\*FAA approved projection

## Phase II



DEN will turn 50 years old requiring an even greater emphasis on maintenance and expanded infrastructure to serve 120+ million passengers

2027  
100 MAP

2045  
120+ MAP

2045  
120+M

# OPERATION 2045 CAPITAL IMPROVEMENT



Based on projected future growth beyond 120M passengers, the following will be evaluated for future consideration:



- New concourse(s)
- Train to the Gates (AGTS)
- ConRAC (consolidated rental car facility)/Automated People Mover
- Airfield Capacity
- Additional Deicing Pads and Aircraft Parking Aprons
- Peña Boulevard
- International Arrival Processing
- Additional passenger processing at terminal
- Future Innovation Opportunities
- Workforce Development
- Sustainability (electrification & solar)
- Advanced Air Mobility
- Mobilizing Community Engagement
- Parking
- Utilities Expansion (esp. energy)
- Autonomy and Other Emerging Technologies



# CONSOLIDATED RENTAL CAR FACILITY



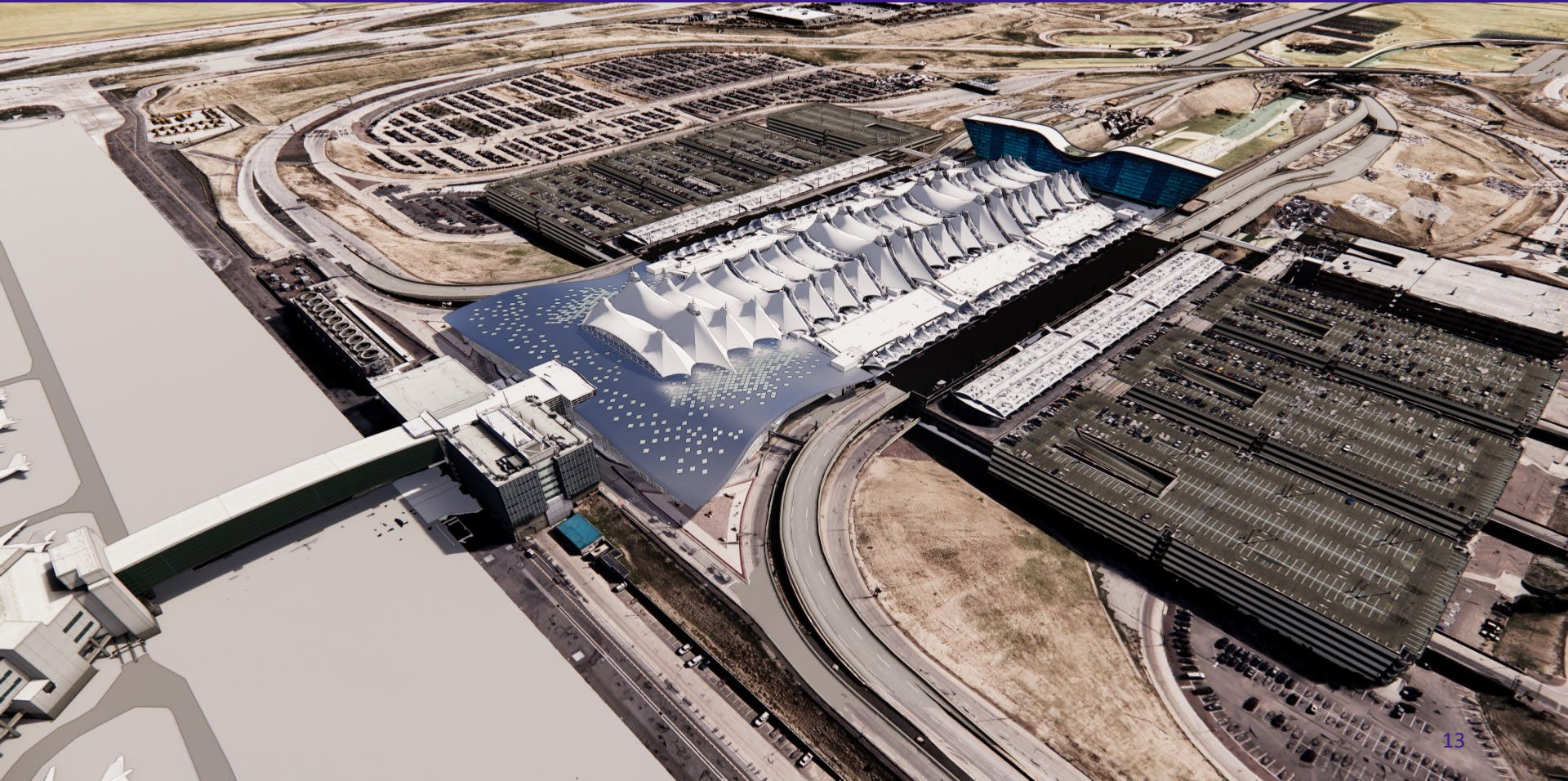


# NORTH TERMINAL EXPANSION





# NORTH TERMINAL EXPANSION





# NORTH TERMINAL EXPANSION





# NORTH TERMINAL EXPANSION



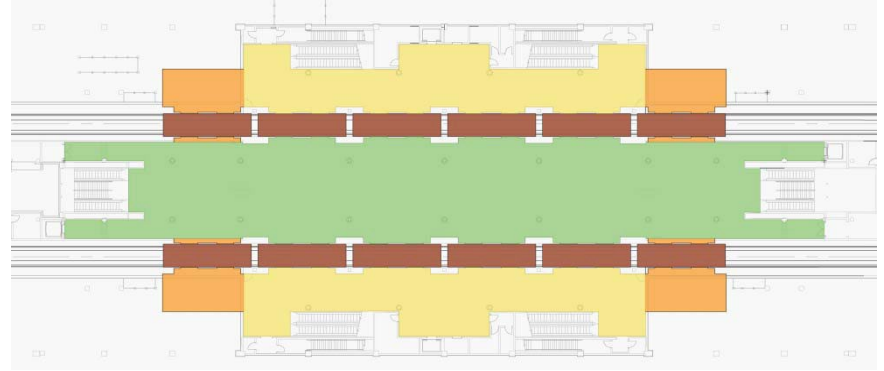


# NORTH TERMINAL EXPANSION





# TRAIN CAPACITY IMPROVEMENTS

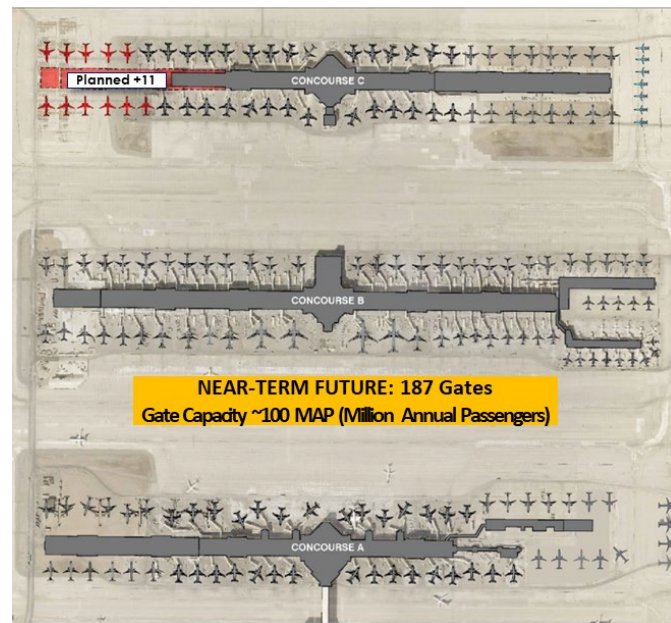


## Expansion to 5 Car Trains

- In 2018, 26 new train cars were ordered to replace the oldest train cars in DEN's fleet and allow for expansion
- With the additional train cars, DEN will increase capacity by 12%
- This creates the possibility for trains to be extended to five or six cars, which the older trains are not capable of
- Terminal and Concourse stations can have additional doors added near the ends of the platforms for the longer trains
- Expansion will provide DEN maximum utilization of Concourses A, B, and C; increases capacity an additional 17%

# CONCOURSE C WEST EXPANSION

- Despite recently completing 39 new gates and expansion of the ground load facility A-East nearing completion, additional gate capacity will be required in the near future.
- Concourse C West is the only remaining expansion available on the three current concourses.
- A maximum of 11 gates can be constructed in a 400,000+ SF facility which will allow us to reach ~100 million annual passengers.



# PENA BOULEVARD

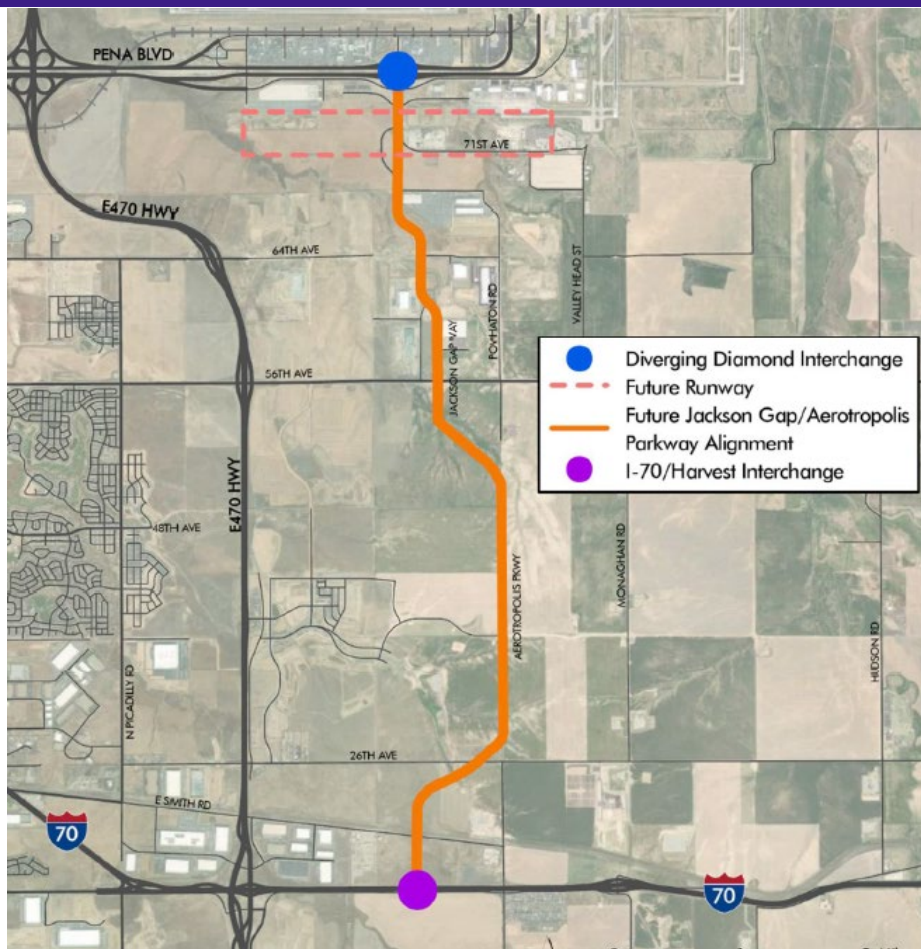


- Peña Master Plan and Transportation Demand Management Plan published
- Complete Terminal to Jackson Gap outbound reconstruction, including diverging diamond interchange at Jackson Gap
- Begin environmental review (NEPA) for I-70 to E-470





# JACKSON GAP & AEROTROPOLIS PARKWAY

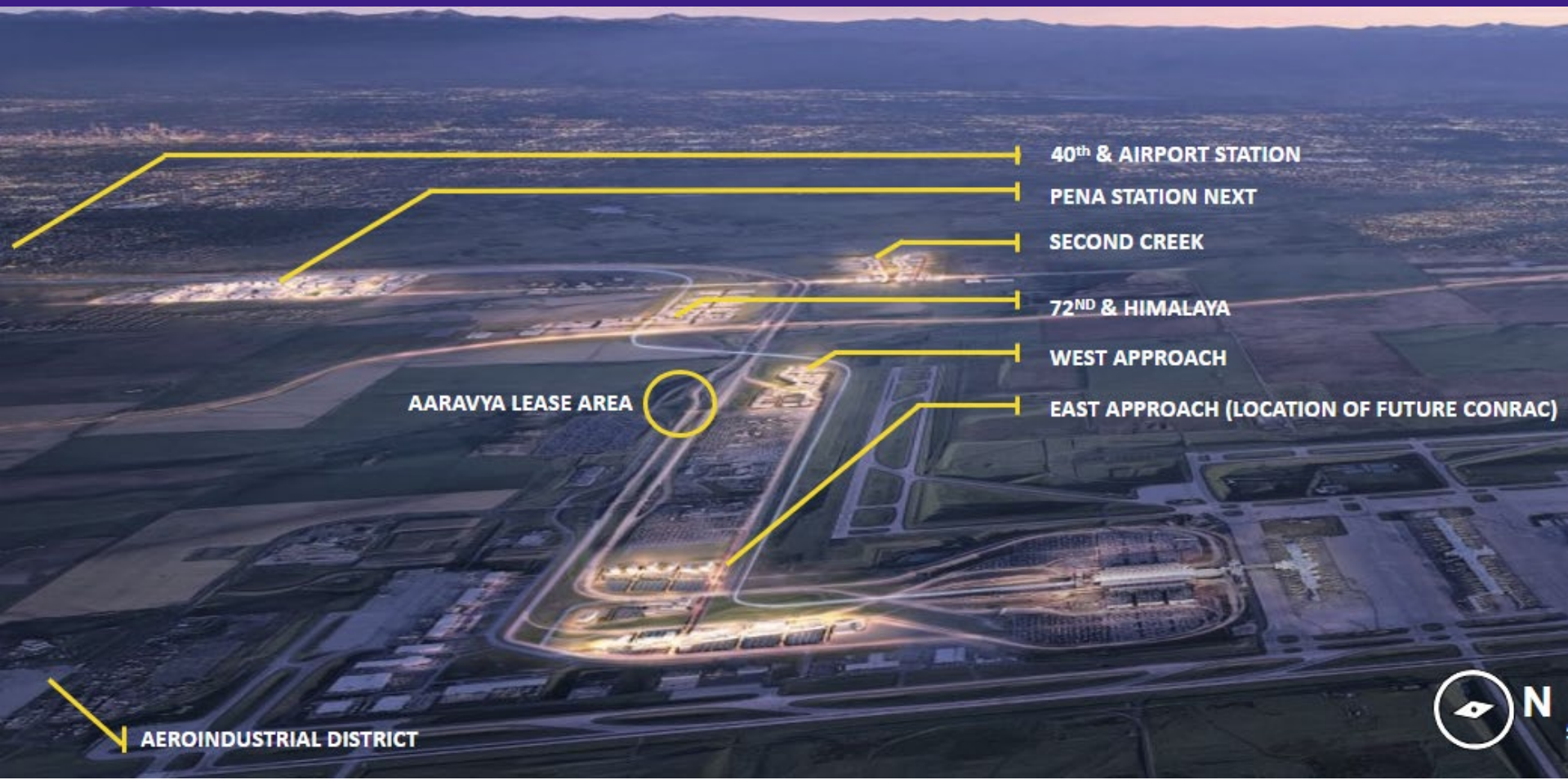




# FIRST CREEK MULTI-USE TRAIL CONNECTION







40<sup>th</sup> & AIRPORT STATION

PENA STATION NEXT

SECOND CREEK

72<sup>ND</sup> & HIMALAYA

WEST APPROACH

EAST APPROACH (LOCATION OF FUTURE CONRAC)

AARAVYA LEASE AREA

AEROINDUSTRIAL DISTRICT



